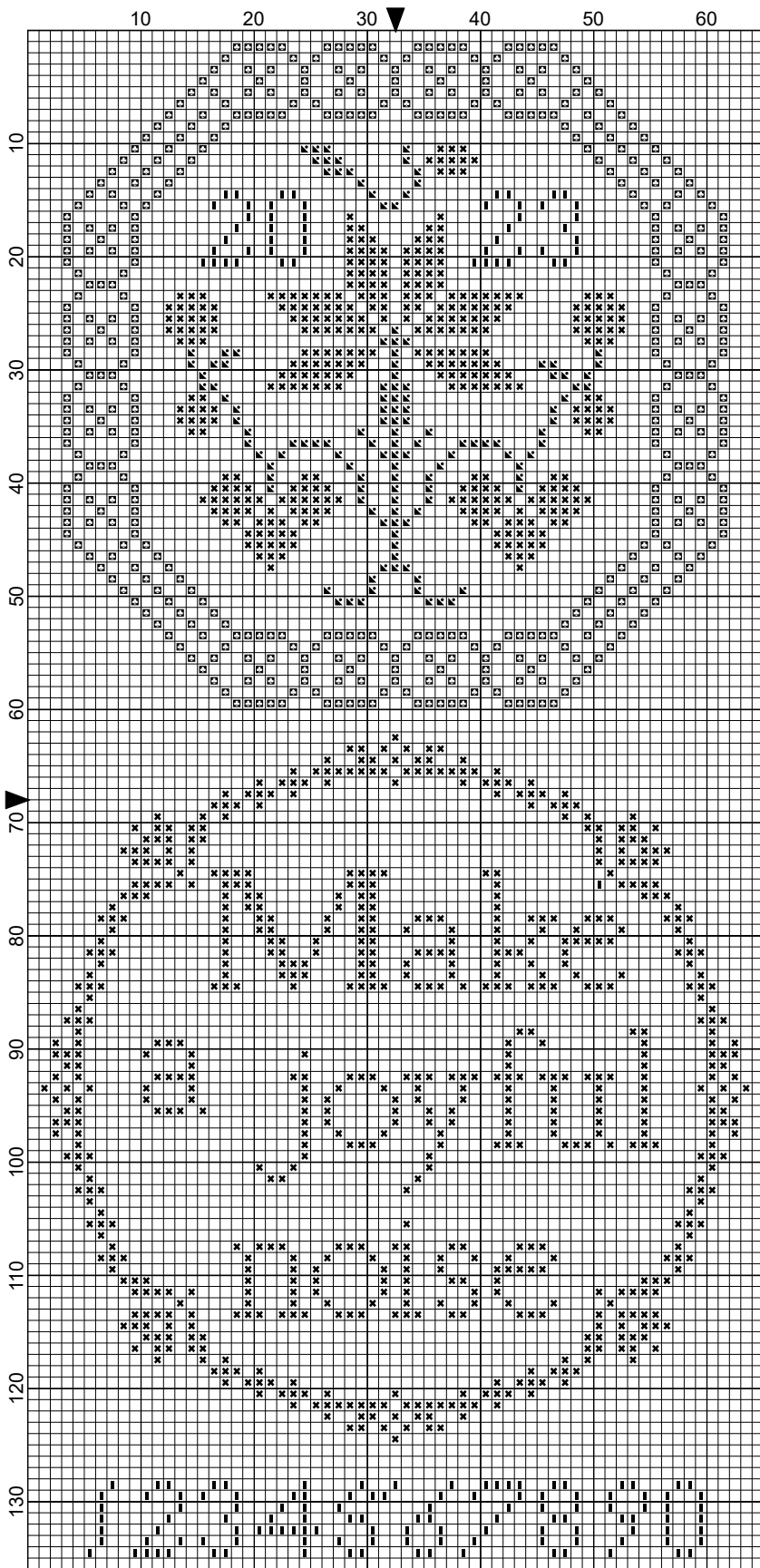


Make a Joyful Noise (Pin Keep 1) by Bluestocking Samplers



Legend:



-  GAF-7004
-  WDW-1223
-  WDW-1277
-  WDW-1331



2023 Bluestocking Samplers

Make a Joyful Noise (Pin Keep 1)

Author: Bluestocking Samplers
Copyright: 2023 Bluestocking Samplers
Grid Size: 65W x 136H
Design Area: 3.15" x 6.70" (63 x 134 stitches)

Legend:

 [2] GAF 7004 (456 stitches, 0.2 skeins)
 [2] WDW 1223 (172 stitches, 0.1 skeins)

 [2] WDW 1277 (130 stitches, 0.1 skeins)
 [2] WDW 1331 (1045 stitches, 0.5 skeins)

The floral motif is 59x59 stitches, and the motto motif is 63x63.

The model was worked on 30-count linen in "Portobello" by Access Commodities. The finished pin keep measures approx. 4 1/2 in. (11.5 cm) across.

DO NOT STITCH THE TWO MOTIFS AS CLOSE TOGETHER AS THEY ARE ON THE CHART! Leave *at least* an inch of fabric around each motif for the mounting!

To make the pin keep, you will need

- a worked motif
- backing fabric or a second worked motif
- two circles of heavy cardstock or mat board (preferably acid-free), the size you want your finished pin keep
- sewing thread and needle
- scraps of quilt batting the size of your finished pin wheel (thicker batting, or more layers, will make a more macaron-like wheel)
- acid-free glue (optional)
- small quilt-binding clips, spring clothes pins, or craft clamps (optional)
- 15 or more glass-headed pins, or regular flat-headed pins (the quantity depends on the size of your finished wheel and how dense you would like the decorative edge to be); be sure to use no-rust pins!
- fine ribbon for the edge of the wheel, and for a hanging loop (optional)

After stitching and blocking your needlework, trim it into a circle at least 1 inch (2.5 cm) bigger all of the way around than the cardstock circle. Run a line of smallish even gathering stitches near the edges of the fabric; small stitches will keep the gathering even.

Trim the batting into two circles the same size as the card circles. Tack a batting circle to one side of each card circle. (If you have thin batting, or simply want more, cut two circles 1/2" [1.5 cm] smaller than the full-sized ones, and tack the smaller circle to the card, centering it, then the larger one on top of that. You can certainly do multiple layers with progressively-smaller circles of batting, but remember that the "fatter" the batting, the more allowance you will want around the edges of the needlework and backing fabric.) Lay one card, batting side down, onto the back of the cross-stitch motif, and pull the gathering thread ends to snugly enclose the card. Make sure that the motif is centered! Secure the ends of the gathering thread, and use the remaining thread ends to run across the opening a few times, across the middle, and secure the ends of the thread; you should end up with a kind of "asterisk" or star of threads across the opening, keeping the motif snug on the card circle; use more thread if necessary, as this is what keeps the needlework secure and taut on the card. Repeat with the second motif or the backing fabric.

Align the two sides if you are using two pieces of needlework. Clip the sides together with the quilt binding clips, if you want. Using the needle and thread, carefully blind-stitch the two circles together. (You can tack the two circles together with glue first. Be careful not to run the glue too close to the edge of the circle or it will seep out when you press the two circles together. Clip it all around the edge with clothes pins or quilter's basting clips, and let dry thoroughly. You may still want to blind-stitch the edges, so that they meet more neatly.)

If you want to add ribbon, run a length of it around the edges of the wheel. Put in a pin at the center bottom ("six o'clock"), through the ribbon and into the center of the wheel, then one pin each at three and nine o'clock. Tie a bow and/or loop in the ribbon. Put the rest of the pins in. Tack the bow and hanging loop with very small stitches, so that it doesn't come loose.